

CORN EXCHANGE NEWBURY



APRIL – JULY



CAFÉ BAR | OUTDOOR | THEATRE | CINEMA | LEARNING CENTRE | THE BASE

SUMMER 2025

cornexchangenew.com
Box Office 01635 522733



WELCOME



Welcome to a brand-new season at the Corn Exchange!

Before I launch into the season's highlights, I want to say a huge thank you to those in our community who nominated us for the

Newbury Heroes Award, which we were awarded in December. It is a real boost to our team to receive such commendation and to know that we are a venue delivering events that are so appreciated by residents. Thank you.

So, on to the summer season... where to start with so much on offer!

This season sees the first of this year's outdoor performances with Gorilla Circus returning to Newbury. This contemporary circus company will bring **RPM** (pg 8), an exhilarating show on a giant moving treadmill that explores the tragic, comic and absurd aspects of modern society.

There are a number of family offerings this season including Michael Morpurgo's critically acclaimed **Farm Boy** (pg 17) and a song-filled adaptation of Julia Donaldson's **The Baddies** (pg 30).

If dance is more your thing, you're spoilt for choice. In June we're delighted to welcome **INTOTO** (pg 31), showcasing London Studio Centre dance graduates, with three intriguing and physical contemporary dance pieces. Later that month, we offer the ultimate burlesque and cabaret experience, **Tease** (pg 34); led by London's top comedy compère and award-winning West End dancers, they promise an unforgettable night! And in July, you're treated to Luz & Mannion's **Blue Ghost** (pg 38), where flamenco meets electronic dance in a delight to the senses.

Theatre lovers, be sure not to miss the gripping coming-of-age piece, **Duck** (pg 19), by Two Magpies Productions, about adolescence, the pressures of sporting competition and finding identity in an environment that doesn't cater for difference.

In August, we cannot wait to see our Youth Theatre take to the stage with **Alice in Wonderland** (pg 41), presenting a large and hugely talented cast to share their talents in this well-known and colourful tale.

Over at The Base, we're excited to present **Joan Miró** (pg 10), one of the 20th century's most influential artists at the forefront of Surrealism and Dadaism with his exhibition **Painting and Poetry**. This is followed by **Wildlife Photographer of the Year 60** (pg 11), which is always a firm favourite. In its 60th year, tickets will sell quickly, so don't delay on this one.

As always, we continue to offer a wonderful programme of workshops and classes to nurture your wellbeing. Creative activity is well researched to offer many personal benefits, and we promise you'll leave feeling more connected and uplifted.

Being a community arts venue, we provide a wonderful place to meet with friends, family and colleagues, with a tempting menu of locally supplied treats and spaces to chat, rest or work. We have a programme of Seasonal Socials including the return of our popular **Music on the Terrace** (pg 7) with local musicians performing this summer and the second year of our **Sustainability Fair** (pg 7), where you can meet others passionate about the environment.

Join the **Spirit Chasers** (pg 22) in their first visit to the Corn Exchange to carry out a paranormal investigation in our historic building. With all proceeds going to the Old Library campaign to open a new community arts hub for Newbury.

I feel certain you'll find something in our summer season. Whatever your reason to visit, as always, we can't wait to welcome you – see you soon!

Jessica Jhundoo-Evans
DIRECTOR

MEMBERS
PRIORITY BOOKING

Thu 6 Mar,
10am

PUBLIC
BOOKING

Thu 13 Mar,
10am



OLD LIBRARY

CREATING A NEW ARTS HUB
FOR NEWBURY



WE NEED YOUR SUPPORT

Help us to create a new arts hub at the Old Library in Newbury to become a permanent home for our creative participation activity, which:

- Reduces social isolation and loneliness
- Improves mental health locally
- Builds young people's confidence and self-esteem



CAN YOU HELP TRANSFORM LIVES?



**DONATE
TODAY**



Find out more: cornexchangenew.com/oldlibrary



The Corn Exchange (Newbury) Trust is registered charity 1080567

CAFÉ BAR

SCAN THE QR
CODE TO SEE OUR
FULL MENU



Grab a bite to eat or relax with a drink while supporting your local arts centre. Our Café and Balcony Bar make the perfect place to meet with family, friends, or colleagues. There is plenty of natural light, room to park your buggy and quiet corners to work during the day.

EATING & DRINKING



Our Café Bar offers something for everyone, from freshly made paninis and loaded jacket potatoes to delicious homemade sweet treats and pastries, handmade by local baker Camilla's Cakes and Hoxton Bakehouse. Plus, don't forget to bring your reusable cup for a 25p discount on our delicious range of hot drinks. Every purchase at our Café Bar helps support all the work we do here at the Corn Exchange, so your visit makes a difference. Check out our full menu and seasonal specials at cornexchangenew.com/eating-drinking



VENUE HIRE

Planning a celebration or work event? Let us help you make it truly unforgettable! With our Auditorium, Cinema, and Balcony Bar available for hire, combined with our in-house creative expertise, we'll help bring your vision to life.



PARTY PACKAGES

Book a dance, drama or craft party with us. Food options are available. Visit our website for more details or for enquiries email us at hires@cornexchangenew.co.uk

Jacket potato and coffee image credit: Tim Easton



OUR CINEMA

You may not know, but tucked away on the top floor of the Corn Exchange is our cosy 40-seat cinema. Open six days a week, we show the best of contemporary and classic cinema, including arthouse, independent and family films, blockbusters, and live screenings of theatre, dance and music performances. Our cinema is the perfect place to come to switch off and perhaps enjoy some refreshments from our Café Bar.

We also offer regular special screenings including **Silver Screens** for the over-60s, **Subtitled** screenings, monthly **Dementia Friendly** films, **Relaxed** screenings and regular **Ageing Creatively Cinema Club** and **Film Club** meets. For families, we have weekly **Parent & Babies** screenings, as well as a Saturday morning **Family Film and Craft** offering and regular **Tots Cinema** screenings. Find out more at cornexchangenew.com/cinema



LIVE & ENCORE SCREENINGS

See live and encore performances from some of the most famous stages in the world, streamed to our cinema and auditorium screens. Enjoy productions from the likes of the National Theatre, Royal Ballet & Opera, Exhibition On Screen and special live music events from the comfort of your local theatre! Find out more at cornexchangenew.com/cinema



RBO: TURANDOT (12A)

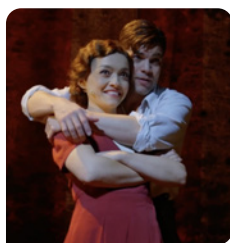
Tue 1 Apr 7.15pm



ANDRÉ RIEU'S 75TH BIRTHDAY CELEBRATION: THE DREAM CONTINUES (CERT TBC)

Sat 12 Apr 7pm

Sun 13 Apr 1pm



BONNIE AND CLYDE THE MUSICAL (12A)

Thu 1 May 7.30pm

Sun 4 May 1pm



NT LIVE: DR STRANGELOVE (15 TBC)

Wed 2 Apr 2.30pm

Thu 3 Apr 7.30pm

Wed 9 Apr 2.30pm



MET OPERA LIVE: LE NOZZE DI FIGARO (CERT TBC)

Sat 26 Apr 6pm



RBO ENCORE: DIE WALKÜRE (CERT TBC)

Sun 18 May 2pm



MET OPERA LIVE: IL BARBIERE DI SIVIGLIA (CERT TBC)

Sat 31 May 6pm

SEASONAL SOCIALS

Find out more about each of our Seasonal Social events at cornexchangenew.com/seasonalsocials

OPEN MIC NIGHT

6 Apr, 4 May, 1 Jun, 6 Jul & 3 Aug

7pm

Free (no booking required)

Age Guide 16+

Support local performers as they showcase their talents in our Balcony Bar. From live music to close-up magic, there's no telling what you might see! Please enquire if you'd like to perform by emailing

boxoffice@cornexchangenew.co.uk



THEATRE, FILM AND TV QUIZ

11 Apr, 11 Jun & 26 Jul 7pm

£3 per person, teams of up to 6 people

Age Guide 16+

Rally your friends and family to create the ultimate team to take on our popular quiz nights.

BOOK CLUB

13 Apr, 8 Jun, 13 Jul & 10 Aug 2pm

Free (pre-booking required)

Come together to chat about our latest read.



FILM CLUB

Wednesdays

16 Apr, 28 May, 18 Jun, 16 Jul & 13 Aug

Please see website for timings and age guides

£10

Join fellow film fans after the screening in our cinema, for a guided informal chat in our Balcony Bar.



MAKE YOUR OWN EASTER BONNETS

Thu 17 Apr

10am – 11am for ages 3 – 5

12pm – 1pm for ages 6 – 10

£10 per child, per session

(All children must be accompanied by an adult)

Join artist Gemma Kirby to craft your own Easter Bonnet using upcycled materials.



POKÉMON CLUB

Third Saturday of the month

10.30am – 1pm

Free (no booking required)

Under-14s must be accompanied by an adult

Join our monthly meet-up to trade and play with your friends and other likeminded people.



Cinema image credit: Simon Vail

ROCK & ROLL

Sundays 3pm – 6pm

Free (no booking required)

Bring your vinyl and grab your dice for music and games every Sunday in our Balcony Bar! Enjoy a drink, start a D&D campaign, bring a board game or play your own vinyl on our record player.

DUNGEONS & DRAGONS CAMPAIGN

18 May, 15 Jun, 20 Jul & 17 Aug

3pm for ages 7 – 13
(must be accompanied by an adult)

4.30pm for ages 14+

£15 for course

Join us for our on-going D&D campaign sessions in the Balcony Bar. If you are a Dungeon Master and are interested in hosting a campaign in our space, please get in touch via boxoffice@cornexchangenew.co.uk

SUSTAINABILITY FAIR

Sat 7 Jun 10am – 4pm

In partnership with The Base, to coincide with the *Wildlife Photographer of the Year 60* exhibition (pg 11), our Sustainability Fair aims to bring together eco-friendly individuals, makers, businesses and charities that are leading the way in our communities, to minimise the impact we have on our environment. Come along to connect with others and share ideas.



TABLETOP GAMING EVENT

Sun 20 Jul 11am – 6pm

Free

Browse exhibitors demonstrating and selling tabletop games of all types. These include board, roleplaying, card, family and party games as well as intricate miniatures.



MUSIC ON THE TERRACE

26 Jul, 2, 9, 16, 23 & 30 Aug 4pm – 6pm

Free

Join us for musical performances from talented local artists. Perfectly positioned for the summer evening sun, mingle in our terrace-style seating area with a drink from our bar.



Scan to find
out more
information!

GORILLA CIRCUS: RPM

OUTDOOR



OUTDOOR

Sat 12 July 6.30pm & 9.30pm

Tickets Free
(no booking required)

Running Time 40 minutes

Age Guide 7+

Location Market Place,
Newbury

**'A DAZZLING DISPLAY OF
GRAVITY-DEFYING STUNTS'**

NORWICH NEWS

A mesmeric new outdoor show combining exhilarating acrobatics, adrenaline-pumping street dance and breathtaking roller skating, set on a giant moving treadmill!

RPM explores the tragic, comic and absurd aspects of modern society, unravelling untold links between current problems and the UK's troubled history – it asks the question: has this country ever confronted its colonial past?

Gorilla Circus is a contemporary circus company specialising in imaginative, sophisticated high-octane works with strong narratives surrounding global issues.

The Corn Exchange Newbury and 101 Outdoor Art's outdoor programme is supported by Arts Council England and Greenham Trust.

'AN INTERESTING BLEND OF POWERFUL POLITICAL THEATRE AND EXTRAORDINARILY SKILLED CIRCUS'

TOTAL THEATRE MAGAZINE

BASE PASS

UNLIMITED
GALLERY
ACCESS
FROM JUST
£25

BASE PASS
£25 FOR 12 MONTHS* UNLIMITED
ENTRY TO THE BASE GALLERY

BASE PASS PLUS
£30 FOR 12 MONTHS* UNLIMITED
ENTRY TO THE BASE GALLERY
PLUS DISCOUNTS ON SELECTED
WORKSHOPS, COURSES
AND EVENTS AT THE BASE

PLUS YOU'LL RECEIVE
10% OFF AT HONESTY
OWNED OUTLETS*

GIFT A BASE PASS



**GIVE THE GIFT
OF CULTURE**

THE PERFECT GIFT IDEA FOR THE
CULTURE VULTURE IN YOUR LIFE!



Yinka Shonibare CBE: Ritual Ritual Ecstasy of the Modern



Wildlife Photographer of the Year 59



OTTOPIA



FAMILY BASE PASS

£45 FOR A FAMILY OF FOUR TO
ENJOY 12 MONTHS* UNLIMITED
ENTRY TO THE BASE GALLERY

THE BASE
Greenham

WORKING IN
PARTNERSHIP
WITH



Greenham Trust 


Honesty
Bakers &
Makers

*Terms and conditions apply, see our website for full details.



JOAN MIRÓ: PAINTING AND POETRY

A HAYWARD GALLERY TOURING EXHIBITION FROM SOUTHBANK CENTRE, LONDON

Fri 4 – Sun 27 Apr

Open Tue – Sun, 10am – 5pm

Songs and Stories in the Gallery

Thu 17 & Sat 19 Apr, 9.30am

Family Day Tue 8 Apr

Relaxed Day Thu 24 Apr

Poetry Open Mic Night Thu 24 Apr, 6.30pm

Tickets £0 Base Pass Holder (see page 9),
£8.25 full price (£7.25 concs, £6.50 groups
10+, £5 students, FREE under-12s)

Enjoy the works of one of the 20th century's most influential and recognisable artists at The Base.

Joan Miró's highly individual style placed him at the forefront of Surrealism and Dadaism. Primarily known as a painter and sculptor, he was also a celebrated and dynamic printmaker.

This exhibition brings together the series of lithographs Miró created in response to the writings of the celebrated French surrealist poet Robert Desnos. The artwork features abstract elements in dazzling colours and unique symbolic narratives.



OPEN STUDIOS: INSIGHT 2025

Sat 10 – Mon 26 May

Open daily, 10am – 5pm

**Songs and Stories in the
Gallery and Family Day**

Sat 17 May

Tickets Free
(booking required)

Admire the works of 100 local artists exhibiting in Open Studios' flagship exhibition.

From 10 to 26 May, local artists open their studios and welcome you in to learn more about their work. *INSIGHT* features work from each, giving you the chance to choose which you plan to visit.

Visit open-studios.org.uk for participating artists, their studio locations and visiting hours.



Natural
History
Museum
London



© William Fortescue

Wildlife Photographer of the Year

Fri 6 Jun – Sun 20 Jul

Open Tue – Sun, 10am – 5pm

Songs and Stories

in the Gallery Thu 12, Sat 21
Jun, Thu 3 Jul & Sat 12 Jul,
9.30am

Relaxed Days Thu 19 Jun &
Thu 17 Jul

Family Day Sat 12 Jul

Tickets £0 Base Pass Holder
(see page 9), £10.95 full price
(£9.25 concs, £8.75 groups
10+, £6.75 under-16s, FREE
under-5s).

The latest instalment of the world-renowned exhibition, now in its sixtieth year and on loan from the Natural History Museum in London, comes to The Base this summer.

Featuring exceptional images that capture fascinating animal behaviour, spectacular species and the breathtaking diversity of the natural world, this stunning exhibition showcases the Earth's extraordinary diversity and highlights the fragility of wildlife on our planet. Using photography's unique emotive power to engage and inspire audiences, the images shine a light on stories and species around the world and encourage a future of advocating for the planet.

There are exhibition-themed workshops available, for more information please visit page 7 and 8 of The Base brochure.

Box Office 01635 522733

APRIL



SPRING EQUINOX

COMMUNITY

Wed 2 Apr

Act 1 7pm, Act 2 8.15pm

Tickets £15.25 per act,
£23.25 for both acts

A celebration of dance from companies across West Berkshire.

Schools, youth dance companies, community projects and specialist performing arts colleges come together for a special evening. Audiences can enjoy one of the acts or both, at a discounted rate, as the dance platform showcases two 'mini' dance shows across one evening. This is a great opportunity to watch the wealth of talent on our doorstep.



THE CAVERN BEATLES

MUSIC Thu 3 Apr 7.45pm

Tickets £30.25

Running Time 2 hours (including interval)

Take a *Magical History Tour* through the works of the world's greatest pop music phenomenon, The Beatles.

Featuring a group of multi-talented instrumentalists and singers, all of whom are hugely dedicated Beatles fans, experience the uncanny vocal resemblance to the Fab Four, a marker of their upbringing in the same place... Liverpool.

This new tour will celebrate The Beatles' touring years spanning from 1963 through to 1966.

AVALON PRESENTS

THE COMEDY NETWORK

DIFFERENT LINE UP EACH NIGHT!



COMEDY

Fri 4 Apr, Fri 9 May & Fri 4 Jul

8pm

Tickets £16.25, (£14.25 concs)

Age Guide 18+ only

Running Time 2hrs 20mins
(including interval)

Please see our website
for the latest line-up.
The line-up is subject
to change.

Get ready to laugh out loud with an evening of great comedy as Avalon presents *The Comedy Network*.

Existing to bring a roadshow of comedic brilliance to your doorstep, *The Comedy Network* has been a proving ground for some of the biggest names in British comedy. Household names like Lee Mack, Russell Howard, Jenny Eclair, Ed Gamble and Lou Sanders have all cut their teeth on the Network circuit. Previous line-ups have included Simon Brodtkin, Steve Bugeja, Sophie Duker and Flo & Joan. Whether you are looking for a great night out with friends or a fun way to celebrate a special occasion, start your weekend in style at *The Comedy Network*.

April's line-up includes: Ian Smith, Dave Chawner, Horatio Gould and compered by Eleanor Tiernan.

May's line-up includes: Glenn Moore, Katie Norris, Joey Page and compered by Rich Wilson.

July's line-up includes: Chloe Petts, Josh Weller, Alexandra Mason and compered by Steve Hall.

Box Office 01635 522733

13

APRIL



WHIPPED UP!

FAMILY Sun 6 Apr 10.30am, 12pm & 2pm

Tickets £13.25 1 adult and 1 baby
[£6.75 additional adults and babies]

Age Guide Babies 2 months – 2 years and their grown-ups

Running Time 50 minutes (including 20 minutes of play time)

Join us at the smallest diner in town, where babies are the customers in this sensory comedy show taking place on our stage!

Fresh from its sold-out run at Watford Palace Theatre, *Whipped Up!* follows Dottie, an eager-to-please 50's-style diner server on their first day on the job – where the baby is the customer, and caregivers are along for the ride. As the server waits on their demanding clientele (imagine babies doing what babies do best – creating adorable chaos!), the server grows increasingly frazzled – and more and more entertaining! Stimulating for tiny audience members with sensory play served up throughout the show, and hilarious for parents/adults watching their loved ones take on roles in an unfolding comedy.



MARCUS BRIGSTOCKE: VITRUVIAN MANGO

COMEDY Tue 8 Apr 8pm

Tickets £19.25

Age Guide 14+

Running Time 1hr 50mins
(including interval)

The master of satirical comedy returns!

What are men for? Most heavy things can be lifted by machines, most problems can be solved by computers and most puddles can be crossed without them gallantly draping their capes over them – so are fellas of any use at all?

Marcus Brigstocke thinks men might still serve some useful function. But what is it? This new show will resolve the entire issue once and for all (in a non-patriarchal, open-minded, progressive sort of way).

ROOM ON THE BROOM



tall
stories



LIVE
ON STAGE

FAMILY

Thu 10 Apr 1.30pm & 4pm

Fri 11 Apr & Sat 12 Apr

11am & 1.30pm

Sun 13 Apr

11am (Relaxed Performance)

Tickets £16.25 (€14.25 concs,
£59 family of four)

Age Guide 3+

Running Time 55 minutes
(no interval)

Based on the best-selling book by Julia Donaldson and Axel Scheffler.

Iggety ziggety zaggety zoom! Jump on board the broom with the witch and her cat.

The witch and her cat are travelling on their broomstick when they pick up some hitch-hikers – a friendly dog, a beautiful green bird and a frantic frog. But this broomstick's not meant for five and – CRACK – it snaps in two... just as the hungry dragon appears!

Will there ever be room on the broom for everyone? Find out in this magical Olivier Award-nominated show for everyone aged 3 and up.

There will be a pre-show workshop available for this show, for more information please visit our website.

Room on the Broom © Julia Donaldson and Axel Scheffler 2001 – Macmillan Children's Books

Box Office 01635 522733



NICK SHARRATT'S PICTURE BOOK DRAWALONG

FAMILY Tue 15 Apr 2pm

Tickets £15.75 (£12.75 under-18s)

Age Guide 4+ (Under-14s must be accompanied by an adult)

Running Time 1hr 15mins (no interval)

Join much-loved children's writer and illustrator Nick Sharratt in a family-friendly, fun-filled drawalong.

He'll be taking a look at some of his favourite books, showing you how to create characters like Tracy Beaker and Timothy Pope, sharing ways to invent your own crazy creatures and giving loads of top tips as you draw along with him.

Nick has illustrated close to 300 books including the much-loved *You Choose*, *Shark in the Park* and *Pants* series.

Bring pencils, paper and something to lean on and expect plenty of chances to join in. There will also be signed books for sale!



MARK THOMPSON PRODUCTIONS PRESENTS SCIENCE MUSEUM: THE LIVE STAGE SHOW

FAMILY Wed 16 Apr 2.30pm & 4.30pm

Tickets £18.75 (£17.75 under-18s, £69 family of 4)

Age Guide Suitable for all ages

Running Time 1 hour approx (no interval)

The Science Museum is hitting the road!

Experience the brand-new stage show from Mark Thompson Productions, designed to spark your curiosity, fuel your imagination, and inspire you in thrilling new ways.

This unmissable family production is packed with wonder and excitement, guaranteed to captivate audiences of all ages. Prepare to be amazed and learn something new along the way in a show that's as educational as it is entertaining!



**SWEENEY ENTERTAINMENTS PRESENTS
POP PRINCESSES**

FAMILY Sat 19 Apr 1pm & 6pm

Tickets £21.50 (£29.50 VIP – includes meet and greet)

Running Time 2hrs 20mins (including interval)

A magical show where beautiful princesses become pop stars!

The four fabulous fairy tale Princesses return to Newbury with their brand-new show.

This children's pop concert features a soundtrack of top pop hits from artists such as Taylor Swift, Meghan Trainor, Miley Cyrus, Dua Lipa and Lizzo, plus a few of the best songs from all your favourite films and musicals. Come and join the fun!



**LICHFIELD GARRICK PRESENTS
MICHAEL MORPURGO'S
FARM BOY**

FAMILY Tue 22 Apr 1.30pm & 4pm

Tickets £16.25 (£14.25 concs, £55 family of 4)

Age Guide 8+

Running Time 1 hour (no interval)

Following successful UK tours and a critically acclaimed run in New York, Michael Morpurgo's compelling sequel to *War Horse* comes to our stage.

It sometimes felt as though time had stood still down on the farm – the old Fordson tractor quietly rusting away at the back of the barn, Grandpa tending to his chickens – that is, until the summer his grandson came to stay, and the old man started sharing stories.

Michael Morpurgo's *Farm Boy* takes to the stage in this delightful, family-friendly show combining drama, storytelling, and original music.

APRIL



THE PHANTOMS: STARRING LEE MEAD

MUSIC **Wed 23 Apr** 7.30pm

Tickets £36 (£33 concs)

Running Time 2hrs 20mins (including interval)

Experience spellbinding West End vocals in one incredible evening.

The Phantoms takes you on a magical journey through iconic shows such as *Les Misérables*, *Miss Saigon*, *West Side Story*, *Joseph*, and of course, *The Phantom of the Opera*.

Featuring former Phantoms direct from the West End production of *The Phantom of the Opera*, alongside West End and TV star Lee Mead, the sensational cast takes you on a journey through the best of the West End, Broadway and beyond.

Plus, discover how Lee Mead went from the dressing rooms of *Phantom* to the living rooms of the nation on his way to winning BBC's *Any Dream Will Do*.

[Disclaimer: *The Phantoms* is in no way connected with and/or approved/endorsed by The Really Useful Group Ltd or Andrew Lloyd Webber.]



JUST MY IMAGINATION: THE MUSIC OF THE TEMPTATIONS

MUSIC **Fri 25 Apr** 7.45pm

Tickets £29.75

Running Time 2 hours (including interval)

Get ready to embark on a musical journey with first-class vocals and musicianship, authentic costumes and mesmerising choreography.

Celebrating 60 years since the release of the unforgettable smash-hit *My Girl*, party to the timeless sounds of the 'Classic Five' that defined a generation; guaranteed to transport you back in time to a world of music, memories and pure soul!

This hugely talented cast of dynamic West End performers brings the music of the 'Number 1 Group in the History of Rhythm and Blues' to the stage with signature hits such as *Papa Was a Rollin' Stone*, *Get Ready* and many more.

This show is guaranteed to transport you back in time to a world of music, memories and pure soul!

TWO MAGPIES PRODUCTIONS PRESENTS
DUCK



Image credit: Pamela Raith Photography

THEATRE

Wed 30 Apr 7.30pm

Tickets £14.25 (€12.25 concs)

Age Guide 12+

Running Time 1 hour
(no interval)



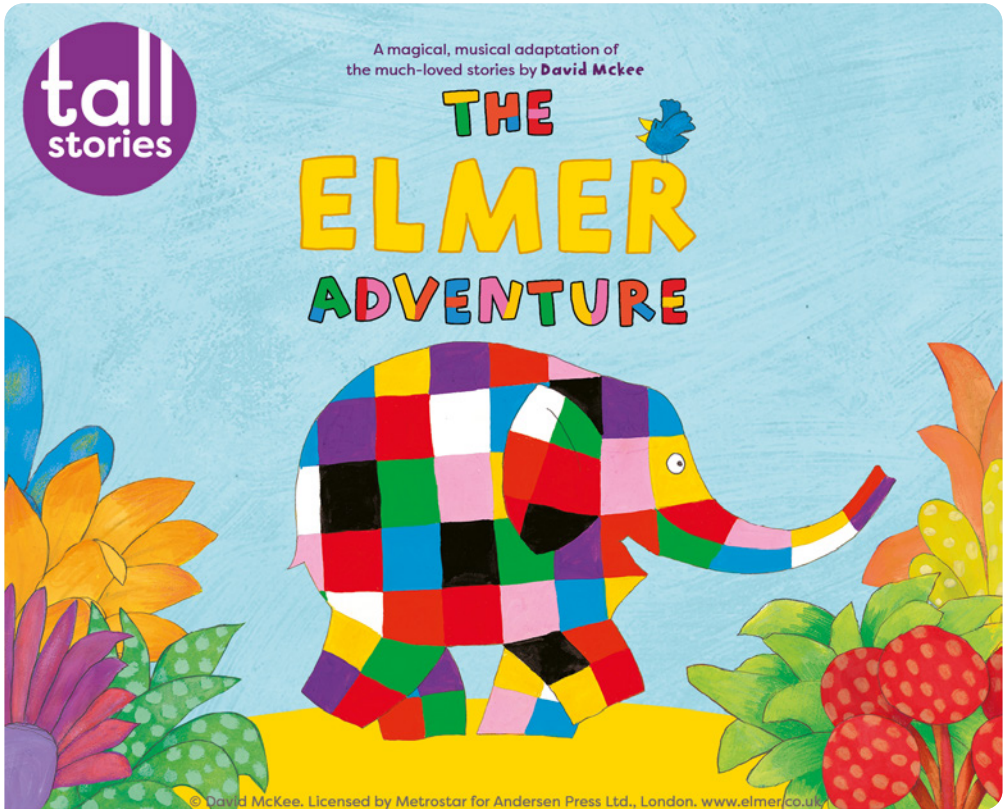
'IT COULD NOT FEEL MORE TOPICAL'
THE GUARDIAN

A gripping coming-of-age drama.

It's the summer of 2005, and Ismail, 'Smiley' to his friends, is about to become the youngest-ever player in his elite public school's First XI cricket team. He sets his sights on immortality – breaking the school batting record and getting his name into Wisden. Things are about to heat up.

From award-winning playwright maatin, *Duck* is about adolescence, the pressures of sporting competition, and finding your identity in an environment that doesn't cater for difference.

THE ELMER ADVENTURE



FAMILY

Fri 2 May 1.30pm & 4.30pm

Sat 3 & Sun 4 May

10.30am & 2pm

Tickets £16.25 (£14.25 child, £59 family of 4)

Age Guide 3+

Running Time 55 minutes

'TALL STORIES SETS THE BENCHMARK FOR CHILDREN'S THEATRE'

THE SUNDAY TIMES

Everyone's favourite patchwork elephant, Elmer, comes to the Corn Exchange stage!

Join three friends on a joyful jungle adventure in Tall Stories' magical, musical adaptation of the much-loved *Elmer* books by David McKee. Everyone loves the stories about Elmer the patchwork elephant – whether he's pretending to be an ordinary grey elephant or playing a practical joke. But has anyone ever actually seen him? Can you help find him? Is that a patchwork trunk hidden among the trees and bushes of the jungle?

The enchanting and colourful world of Elmer is brought to life through songs, storytelling and puppetry live on stage – for everyone aged 3 and up. Celebrate Elmer's unique patchwork colours and wear all your colourful clothes when you see the show.

There will be a pre-show workshop available for this show, for more information please visit page 4 of the Learning Centre brochure.



SWINGING AT THE COTTON CLUB

MUSIC

Wed 7 May 7.30pm

Tickets £29.50
(£22.25 under-18s)

Age Guide Suitable for all ages

Running Time 2hrs 20mins
(including interval)

Take a step back into 1920s & '30s New York City and through the doors of Harlem's hottest nightclub, The Cotton Club!

For one night only, *Swinging at The Cotton Club* celebrates the breathtaking dance and music of the legendary nightclub. This is where dancers such as Bojangles Robinson and the Nicholas Brothers lit up the stage with their breathtaking routines, whilst the music greats of the era, such as Duke Ellington, Cab Calloway, and Ella Fitzgerald, would have had the club swinging.

In this show, the exhilarating dance and music of the Cotton Club is recreated by the fabulous Lindy Hop Dance Company, alongside The Harry Strutters Hot Rhythm Orchestra featuring American vocalist Marlene Hill and compere/vocalist Megs Etherington.

Get ready to be transported back to a glamorous era of Speakeasies, Flappers, and Lindy Hop, with *Swinging at the Cotton Club!*



SPIRIT CHASERS

FUNDRAISING **Fri 25 Jul** 9.30pm – 1am

Tickets £39 (includes refreshments)

Age Guide 18+

Carry out a paranormal investigation at the Corn Exchange.

Steeped in history, the Corn Exchange was built in 1861, replacing the run-down Guildhall where merchants first traded agricultural products. It continued to be used as a trading place until the great depression in the 19th century and was the venue for many key moments in Newbury's history including royal visits and the opening of the railway until its transformation into a theatre in 1993.

On the night you will split into teams with a lead investigator, where you'll be able to experiment with state-of-the-art equipment or use more traditional methods of investigating the paranormal.



JOIN US TODAY

GET PRIORITY BOOKING BY BECOMING A MEMBER

£35 PER YEAR



PRIORITY BOOKING

Get first choice of seats for live events and film, Learning Centre and The Base throughout the year



10% OFF IN THE CAFÉ BAR



NO FEES ON TICKET EXCHANGES AND RESALES*



SUPPORTERS NEWSLETTER



DIGITAL MEMBERSHIP CARD

MEMBERS PRIORITY BOOKING
6 MARCH, 10AM

PUBLIC BOOKING
13 MARCH, 10AM



VISIT WWW.CORNEXCHANGENEW.COM/MEMBERSHIP OR SPEAK TO A MEMBER OF OUR BOX OFFICE TEAM

You can increase your level of support by becoming a Corn Exchange Companion CORNEXCHANGENEW.COM/COMPANIONS

*Terms and conditions apply



BEYOND THE STAGE

Tue 15 Jul

Schools event 10am – 2.30pm
Open Evening event 6.30pm – 8pm

Tickets For Schools bookings please email getinvolved@cornexchangenew.co.uk for more information. Open Evening event, tickets are free, pre-booking required.

Following a successful event in 2024, *Beyond the Stage* runs as part of the Careers in the Arts programme, and comes to the Corn Exchange in July. Open to anyone wanting to find out more about opportunities within the creative industries, we are opening our doors to local secondary school students, teachers and parents to come and experience the different career pathways in the creative arts sector.

From interactive workshops to inspiring talks and Q&As, those attending will have the opportunity to learn directly from industry professionals and hear about their journey into a career in the arts. The Open Evening event is aimed at parents and teachers wanting to support young people with their career pathways and will run from 6.30pm – 8pm.

Careers in the Arts is a joint project with The Watermill Theatre and funded by Greenham Trust.

**CAREERS
IN THE
ARTS**



ROBIN HOOD AND MAID MARIAN

PANTOMIME Fri 28 Nov – Sat 3 Jan

Tickets £19.25 – £33.75

Adult Only, Relaxed, Captioned, Audio Described, BSL Interpreted and Dementia Friendly performances are available.

The award-winning Pleased Brown and Wilsher return with another adventure. Expect plenty of mischief, mayhem and merry-making!

Step into the magical forest of Newburyshire and join our swashbuckling hero, Robin, and his band of merry outlaws. The awful Sheriff of Newburyshire has been in power for 14 long years, persecuting the poor, rewarding the rich and eating the local swans. But Robin, after a daring stand-off at the roundabout named in his honour, is feeling deflated. Will he ever defeat the evil Sheriff before he and his merry band are locked up for good? Or will (equally swashbuckling) Marian with her smarty-pants brain, kick-ass moves and a pair of fabulous shoes outwit the dastardly Sheriff?

Enjoy toe-tapping songs through the decades and plenty of jokes that'll have you *bowing* with laughter.

Supported by Rivar Ltd.

RIVAR
New Homes

Box Office 01635 522733

23

NEWBURY SPRING FESTIVAL AT THE CORN EXCHANGE

YOUNG ARTISTS LUNCHTIME RECITALS

This year the first recital will take place at Newbury Methodist Church where Timothy Stewart will play the recently restored organ on Monday 12 May, 12.30pm. To find out more, please visit newburyspringfestival.org.uk.



MAIASTRA STRING QUARTET

Wed 14 May, 12.30pm

Directed by prize-winning violinist Akiko Ono, this

lunchtime programme includes Mendelssohn's much-loved Piano Quartet No.3 in B minor, which was completed shortly before Mendelssohn's 16th birthday. This will be followed by Dvřák Piano Quartet No. 2 in Eb major, a work demonstrating wonderful dramatic conviction and intensity.



APOLLO'S CABINET

Fri 16 May, 12.30pm

Join award-winning ensemble *Apollo's Cabinet* on a European tour. You will be taken on a Baroque musical voyage following Charles Burney on his

journey: a kaleidoscope of European Baroque music with compositions from each of the countries Burney visited, interspersed with readings of his original 18th – century diary entries and anecdotes from his travels.



PIANO COMPETITION WINNER

Mon 19 May, 12.30pm

Newbury Spring Festival is delighted to welcome the winner of the 2025 Sheepdrove

Piano Competition to the Corn Exchange to perform a recital as part of the Festival's Young Artists Lunchtime Series. The winning pianist's programme will include works by Ravel, this year's featured composer, to celebrate his 150th anniversary.

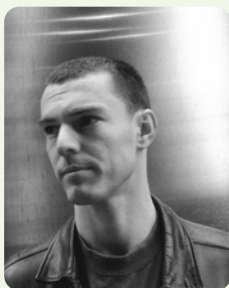


DANIEL SHAO

Wed 21 May, 12.30pm

Daniel Shao is a British-Chinese flautist who studied at the Purcell School, Oxford University, and Royal Academy of Music with teachers including Samuel

Coles, graduating from both universities with first class honours and a DipRAM. He was a finalist in the 2024 Royal Over-Seas League Annual Music Competition. He'll be accompanied by Joseph Havlat for this lunchtime recital including works by Bach, Prokofiev and Bonis.



FINN CARTER QUARTET

Fri 23 May, 12.30pm

The Finn Carter Quartet comprises some of London's most important up-and-coming jazz musicians. Separately, they all regularly tour the world with musicians such as

Loyle Carner, Sampha and Tom Misch. They are all technically virtuosic, but the music they create together is more than that; it is sensitive, emotive and synergistic.

12.30pm | Tickets £18
(£90 series ticket for all 6 lunchtime recitals,
including booking fees)



Two weeks of
World-Class Music
10 – 24 May



FESTIVAL PARADE

Sat 10 May, 4.30pm

Come and celebrate the opening of the 2025 Spring Festival and watch the Festival Parade as it moves through Newbury, culminating in the Market Place!

Working in partnership with Corn Exchange Newbury & 101 Outdoor Arts, this promises to be a vibrant celebration to mark the opening of the Newbury Spring Festival, led by the Giant Bandmaster Puppet.

FREE (NO-BOOKING REQUIRED)



PETER DONOHOE CBE

Sun 11 May, 3pm

Peter Donohoe CBE is one of Britain's foremost pianists, whose international career was launched by his success at the 1982 Tchaikovsky Competition in Moscow. This recital will include works from Schumann, Busoni, Chopin and Debussy, before culminating with Rachmaninov's *Variations of a Theme of Chopin*, Rachmaninov's first large-scale piece for solo piano, which explores an enormous range of pianistic challenges at the outer reaches of difficulty.

£25 – £30 Running Time 2 hours approx.



GOOD VIBES MUSIC ACADEMY: SHOWCASE PERFORMANCE

Mon 12 May, 7.30pm

Now in its third year, the *Good Vibes Music Academy Showcase Performance* is a joyful celebration of the rich and vibrant musical life of our community. This concert brings together local musicians of all ages and backgrounds, highlighting the incredible talent that thrives across our region.

£8 (UNDER-16S FREE) Running Time 2hrs and 15mins approx.

FOR A FULL PROGRAMME OF EVENTS VISIT
newburyspringfestival.org.uk

Box Office 01635 522733

NEWBURY SPRING FESTIVAL AT THE CORN EXCHANGE



AN EVENING OF INDIAN CLASSICAL MUSIC

Tue 13 May, 7.30pm

Enjoy the beautiful sounds of Indian classical music in this concert featuring two leading ambassadors with worldwide reputations. Debasmita Bhattacharya is a luminous talent in Indian classical music, combining a deep understanding of tradition with an innovative spirit that revitalizes the essence of Hindustani music. Returning by popular demand after his Festival debut last year and joining Debasmita, we welcome back tabla player Kousic Sen, whose extraordinary talent has captivated audiences worldwide.

£15 Running Time 2 hours approx.



ALISTAIR MCGOWAN: THE PIANO SHOW

Wed 14 May, 7.30pm

The hugely versatile and internationally famous Alistair McGowan is an impressionist, actor, writer, stand-up comedian and, latterly, pianist. Alistair is fondly remembered for his popular BAFTA-winning TV show *The Big Impression*, in which he impersonated everyone who was anyone in the early noughties. Following his No. 1 classical album, Alistair now blends masterful impressions with piano gems by Chopin, Elgar, Grieg, and Debussy. Expect a lot of beautiful music with a large dose of his trademark comedy!

£30 – £35 Running Time 2 hours approx.

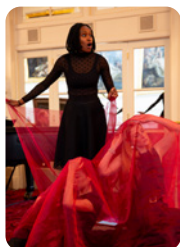


SHEKU KANNEH-MASON WITH CASTALIAN QUARTET

Thu 15 May, 7.30pm

Cellist Sheku Kanneh-Mason's mission is to make music accessible to all, whether that's performing for children in a school hall, at an underground club, or in the world's leading concert venues. For this concert, Sheku joins the Castalian Quartet for an evening to include works for Solo Cello, String Quartet and String Quintet.

£30 – £40 Running Time 2 hours approx.



AN EVENING WITH JOSÉPHINE

Fri 16 May, 7.30pm

The acclaimed ensemble Counterpoise set the colourful scene in 1920s Paris: a time of experimental cinema, Dadaism and lively nightclubs. This performance tells the story, with text, visuals and movement, of the American-French dancer, singer and actress Joséphine Baker, notorious for her banana dance, but also a civil rights activist, champion of women's rights, intrepid French Resistance fighter and 'the most sensational woman anyone ever saw' (Hemingway).

£20 Running Time 2 hours approx.



GROOVE ONTO THE MOON

Sat 17 May, 10.30am

Strap in and prepare to blast off on a cosmic adventure like no other as you venture into the thrilling music experience of *Groove onto the Moon!*

In this fun sci-fi adventure, children aged 3 to 7 and their adventurous grown-ups will be transported into space, encountering alien creatures, embarking on daring missions, and facing challenges that will put their bravery to the test. Follow three intrepid astronaut friends on a mission to discover the first lunar footprint left by Neil Armstrong, proving to their grown-ups that they're ready for big-kid adventures!

£12 (£8 CHILDREN) Running Time 1hr and 10mins approx.



NORTHERN SOULTRAIN

Sat 17 May, 7.30pm

Now in their seventeenth year as the UK's leading Northern Soul band, Northern SoulTrain arrive in Newbury with their big soul shakedown party, promising the hottest soul night around.

Hear the very best soul anthems from Wigan Casino, Twisted Wheel and Blackpool Mecca, with great songs by Dobie Gray, Frank Wilson, Billy Butler and many more. Throw in just a pinch of Motown and we have a new Northern Soul stew served up by Lancashire's very own Northern SoulTrain! This is an authentic soul party!

£25 – £30 (FREE UNDER-30S) Running Time 2 hours approx.



FODEN'S BAND

Sun 18 May, 3pm

Foden's Band are the current 'Double National Champions of Great Britain' as well as being ranked as one of the leading brass bands in the world. Foden's were formed in 1902 by Edwin Foden, originally named The Foden's Motorworks Band. From these humble beginnings few would have thought they would go on to win numerous prizes and competitions.

As well as being successful on the contest front, the band have won numerous awards for CD releases, regularly appear on BBC TV and Radio and perform at all the country's leading concert halls.

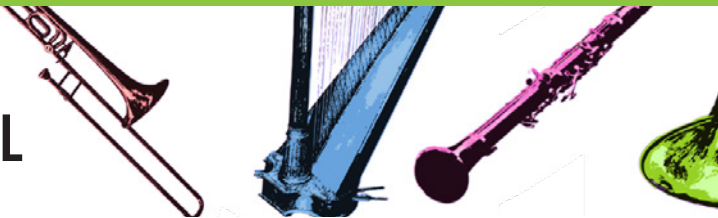
£20 (£10 UNDER-16S) Running Time 2 hours approx.

FOR A FULL PROGRAMME OF EVENTS VISIT

newburyspringfestival.org.uk

Box Office 01635 522733

NEWBURY SPRING FESTIVAL AT THE CORN EXCHANGE



METRONOMES STEEL ORCHESTRA

Tue 20 May, 7.30pm

One of Britain's leading steel band groups, Metronomes are an innovative music group and a unique community in London's Ladbroke Grove. With both traditional styles and modern approaches to their shows, the group are equally at home playing Caribbean classics or recording with grime artists.

The group also have a strong tradition of education and workshops, and we're delighted that they'll be leading workshops with local school children in advance of the Festival and on the day of their Festival performance. They are regulars at

both Notting Hill Carnival and Panorama, the national Steel Pan competition, and will be bringing their trademark carnival sound to Newbury this year.

£20 Running Time 2 hours approx.



THE MUSIC OF LEONARD BERNSTEIN

Wed 21 May, 7.30pm

Leonard Bernstein was a titan of 20th Century music. His timeless compositions for choirs, soloists and orchestras remain essential parts of the musical canon along with the many great songs he wrote that have now become jazz standards. Among his most memorable creations are his extensive musical theatre compositions, of which *West Side Story* is the most famous.

Rob Barron gives voice to this wide collection, in his original and most creative manner. The creative jazz pianist, alongside his trio, recognises that Bernstein's

imaginative creations give themselves generously to a reimagined and updated, improvised interpretation. Rob devotes the first half to *West Side Story*, whilst the second half captures a wide range of music from Bernstein's *Candide*, *On The Town*, *Wonderful Town*, *A Quiet Place* and more.

£25 - £30 (FREE UNDER-30S) Running Time 2 hours approx.



BALLET CENTRAL

Thu 22 May, 7.30pm

Experience the magic of live ballet right on your doorstep as Ballet Central returns to Newbury Spring Festival for their annual visit. This exciting mixed bill is performed by dance talents from the world-renowned Central School of Ballet and features much-loved classical ballet alongside exciting contemporary pieces and some brand-new work, created especially for you.

Each year, Ballet Central brings the joys of dance to theatres across the country, inviting audiences to an evening of excitement, inspiration, and entertainment.

£25 - £30 Running Time 2hrs 10mins approx.



SETH LAKEMAN ACCOMPANIED BY BENJI KIRKPATRICK AND ALEX HART

Fri 23 May, 7.30pm

West Country folk singer and multi-instrumentalist Seth Lakeman will be accompanied by folk singer and musician Benji Kirkpatrick and Devon singer-songwriter Alex Hart. Seth Lakeman was catapulted into the music mainstream when he was nominated for the Mercury Music Prize for his album *Kitty Jay*. 2024

marked the 20th anniversary of the album's release and the start of an incredible solo journey which has included record deals, 11 album releases (including six Top 40), and a clutch of awards.

Widely regarded as the UK's foremost folk singer-songwriter, Seth Lakeman takes the established folk orthodoxy and turns it on its head. The spirit of the rock band meets the timeless and heartfelt subject matter of the folk tale in a blur of fiddle, acoustic guitar and foot-stomping rhythms, with Seth's unmistakable vocals riding the wave.

£30 – £35 Running Time 2 hours approx.



THE BRITISH ATOM BOMB PROJECT: WHAT THEY DIDN'T TELL YOU IN OPPENHEIMER

Sat 24 May, 11am

2025 marks the 80th anniversary of the dropping of the atom bomb on Hiroshima. The movie *Oppenheimer*, gives the impression that this bomb was largely an American creation, made possible by the inspired leadership of Robert Oppenheimer. But this is not accurate. Indeed, the bomb would not have been built without crucial pioneering work in the early years of WW2, here in Britain. Sadly, our early scientific lead was squandered by administrators failing to understand the engineering challenges of building a fission bomb. Professor Tim Palmer CBE FRS is a Royal Society Research Professor Emeritus in the Department of Physics at the University of Oxford, who will discuss the British contribution to the bomb, how we failed to capitalise on our early lead and why we are still paying the price for this administrative incompetence today.

£15 Running Time 1hr 30mins approx.



O MOON OF ALABAMA: A KURT WEILL CABARET

Sat 24 May, 7.30pm

This evening's star-studded show gets under the skin of Weill's creations, bringing you a bewitching compilation of songs from some of his most popular works. It encompasses not only the Brecht-Weill era of 1920's Berlin, but also the more upbeat and nostalgic songs from his Broadway period. Broadway and West End stars Mary Carewe and Walter Van Dyk are joined by a quartet of musicians led by international soloist Anthony Marwood.

£25 Running Time 1hr 20mins approx.

FOR A FULL PROGRAMME OF EVENTS VISIT

newburyspringfestival.org.uk

Box Office 01635 522733

FRECKLE PRODUCTIONS IN ASSOCIATION WITH THE ROYAL LYCEUM THEATRE
EDINBURGH PRESENT
THE BADDIES



LIVE
ON STAGE



FAMILY

Tue 27 May 4.30pm

Wed 28 & Thu 29 May

10.30am, 1.30pm & 3.30pm

Tickets £18.25 (£16.25 child,
£12 schools)

Age Guide 3+

Running Time 1 hour
(no interval)

★★★★★
'BIG AND BOLD.'
THE STAGE

Join the fun as a wicked witch, troll, and ghost try to scare a brave girl in this hilarious, song-filled adaptation of Julia Donaldson and Axel Scheffler's *The Baddies!*

'Meet the very worst Baddies in the world! Don't you dare to come too close to a witch, a troll and an ancient ghost!'

The Baddies love being bad. They roar, spook and cast wicked spells to try and scare a girl out of her wits... who will succeed? Or perhaps the girl is braver than they think...

From the producers of *Stick Man*, *Zog and Zog* and *The Flying Doctors* and with songs by Joe Stilgoe, *The Baddies* is a wickedly hilarious adaptation of Julia Donaldson and Axel Scheffler's smash-hit story. A laugh-out-loud riot for all the family.

The Baddies © 2022 Julia Donaldson and Axel Scheffler. Published by Alison Green Books, an imprint of Scholastic Children's Books.



TOP SECRET: THE MAGIC OF SCIENCE

FAMILY Sun 1 Jun 2pm

Tickets £17.25 (£14.25 child, £57 family of four)

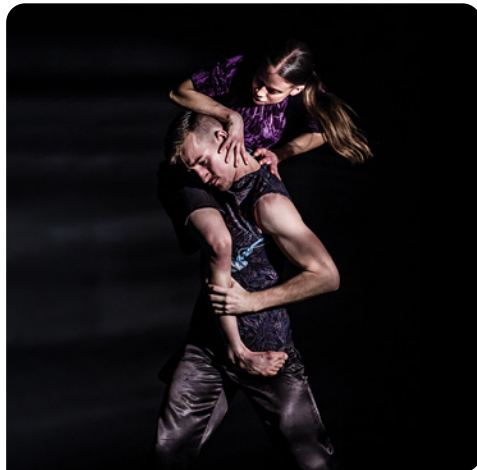
Running Time 1hr 50mins (including interval)

New for 2025, join *Top Secret* as they go on a high-voltage adventure!

Fusing the mystery of magic with wondrous and miraculous feats of science, hang on to your seats and experience a non-stop, action-packed interactive science show with experiments and magic that will capture the imagination.

Expect a fast-moving colourful science show filled with mystery, suspense, and lots and lots of mess!

There will be a pre-show workshop available for this show. For more information please visit page 4 of the Learning Centre brochure.



INTOTO DANCE

DANCE Wed 4 Jun 7.30pm

Tickets £20 (£12.50 concs)

Running Time 1hr 30mins (including interval)

Contemporary dance company INTOTO showcase innovative performances by dancers in their final year of training at London Studio Centre.

INTOTO Dance present three newly commissioned works from choreographers at the cutting edge of the contemporary dance scene, and an impressively physical cast of dynamic dancers.

With a striking and varied programme that will engage dance enthusiasts and newcomers alike, INTOTO are sure to delight, intrigue, and inspire.

'PALPABLE DRIVE, PASSION AND ENERGY THAT COMES FROM THESE YOUNG DANCERS. IT'S A CHANCE TO SEE THE FUTURE OF CONTEMPORARY DANCE.'

WAYNE PARSONS, CHOREOGRAPHER

JUNE



WATERLOO LIVE

MUSIC **Fri 6 Jun** 7.45pm

Tickets £29.50

Running Time 2 hours
(including interval)

The story of the band that shaped the music!

Featuring Sheena Beckett from *ABBA The Story*, this theatrical production charts ABBA's phenomenal career, from the 1974 Eurovision win to their sell-out worldwide tours and continuing success with *Mamma Mia!*

This fabulous evening includes hits such as *Dancing Queen*, *Super Trouper*, *Does Your Mother Know*, *Lay All Your Love On Me*, *Fernando* and the song that started it all... *Waterloo!*



MICHAEL[®] STARRING BEN

MUSIC **Sat 7 Jun** 7.30pm

Tickets £35.75

Running Time 2 hours
(including interval)

Take a journey back in time to remember Michael Jackson – the music and the magic.

Michael[®] Starring Ben is a hit theatre production starring the UK's ultimate Michael Jackson tribute star, Ben Bowman. Not only does he look and sound like the King of Pop, but he's honed his routine so carefully that audiences truly believe they are watching Michael Jackson himself.

Expect the greatest hits of Michael Jackson, along with The Jackson 5, including *Beat It*, *Billie Jean*, *Thriller* and *Man in the Mirror*.



RARE PRODUCTIONS PRESENTS ANNIE

COMMUNITY

Thu 12 & Fri 13 Jun 7.30pm

Sat 14 Jun 2pm & 6.30pm

Tickets £15.25 – £23.25

Running Time 2hrs 20mins
(including interval)

The UK's largest amateur musical theatre youth group returns to our stage.

With equal measures of pluck and positivity, little orphan Annie charms everyone's hearts despite a next-to-nothing start in 1930s New York City. She is determined to find the parents who abandoned her years ago on the doorstep of a New York City Orphanage that is run by the cruel, embittered Miss Hannigan.

Featuring a great soundtrack, this classic musical is a must for all the family.



DISCO INFERNO

MUSIC **Fri 20 Jun** 7.45pm

Tickets £29.75

Age guide 12+

Running Time 2 hours (including interval)

Relive the dazzling era of glitter, glamour, and groovy beats in a high-energy celebration of the golden era of disco!

With electrifying performances, stunning costumes and an unforgettable light show, this spectacular production is a journey through disco's enduring legacy, celebrating the iconic hits of Donna Summer, Earth Wind & Fire, The Bee Gees, The Jackson 5 and more. Get ready to *boogie on down* to a line-up of smash-hits including *It's Raining Men*, *Love Train*, *Car Wash* and, of course, *Disco Inferno*!

Feel the heat and catch the disco fever like never before!



MONEY FOR NOTHING

MUSIC **Sat 21 Jun** 7.45pm

Tickets £33.50

Age Guide Suitable for all ages

Running Time 2 hours (including interval)

Prepare to be captivated by the authentic sounds of one of the most successful rock bands of all time, Dire Straits.

Featuring all of their legendary hits, audiences are treated to those soaring guitar solos and instantly recognisable riffs by an incredibly talented band in a musical encounter you will never forget.

The band will perform *Money for Nothing*, *Romeo and Juliet*, *Sultans of Swing*, *Private Investigations*, *So Far Away* and many more much-loved classics drawn from six platinum albums.

TEASE



VARIETY

Fri 27 Jun 7.30pm

Tickets £32.25

Age Guide 18+

Running Time 1hr 55mins
(including interval)

Step into the world of *Tease* – the ultimate burlesque and cabaret experience where sensuality and unadulterated fun collide to create an unforgettable evening.

The show is led by London's top comedy compere and award-winning West End burlesque sensations, 'Lady Lust' and 'Miss Temptation', and their famous *Tease* group dancers. You can enjoy cabaret, circus and variety acts from across the UK, set to hit tracks from *Burlesque*, *Chicago* and chart-topping tunes by Cher, Christina Aguilera and many more favourites.

Tease is a celebration of love, life and the power of self-expression – a captivating experience that will linger in your memory long after the curtains fall.

So, book now and let's make it a night to remember!



WOMEN IN ROCK

MUSIC Sat 28 Jun 7.45pm

Tickets £28.25

Running Time 2hrs 20mins
(including interval)

Experience the sensationally strong female leaders of rock.

Celebrating hits from Blondie, Suzi Q, Janis Joplin, Joan Jett, P!nk, Bonnie Tyler, Cher and so many more in a show unlike any other.

Expect iconic songs such as *Piece of My Heart*, *Black Velvet*, *You Oughta Know* and *Left Outside Alone* as we show you just what these women are made of. You'll be left in awe of the vocal ability of the *Women in Rock* cast!



VOXFRESH

COMMUNITY

Sun 29 Jun 2.30pm

Tickets £20 (£15 concs)

Running Time 2 hours
(including interval)

VoxFresh returns to the Corn Exchange for a celebration of a hugely successful year!

VoxFresh, a vibrant local pop singing group for young people aged 4 to 18, is ready to take the stage.

Featuring hit songs from P!nk, Rascal Flatts, David Guetta and more, this performance is not just a celebration of their hard work and dedication over the past year – it's *Where the Adventure Begins* for these future popstars!

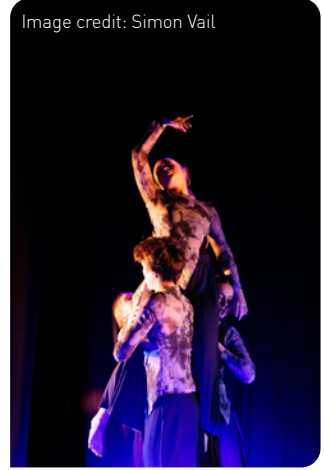


Image credit: Simon Vail

YOUNG PERFORMERS SHOWCASE

COMMUNITY

Tue 1 Jul 7.30pm

Tickets £10

Join us for an evening of dance, theatre and music celebrating local talent.

This show has been produced by Reuben Spencer, a local dancer and choreographer, who has curated an evening of performances from schools, youth companies and colleges in West Berkshire and the surrounding areas.

Come along and support this annual showcase.



CLOUSBUSTING: THE MUSIC OF KATE BUSH

MUSIC Thu 3 Jul 7.45pm

Tickets £29.25

Age Guide Suitable for all ages

Running Time 2 hours (including interval)

Experience the longest-running and most universally celebrated tribute to the music of Kate Bush.

This is the only band in the world to have performed Kate's music with her original bass player and long-standing sound engineer Del Palmer, as well as drummer and percussionist Preston Heyman.

Featuring material from across Kate's hugely successful catalogue of albums, the show includes hits such as *Wuthering Heights*, *Babooshka* and *Hounds of Love* – as well as *Running Up That Hill* – the worldwide No.1 hit single that took the charts by storm 37 years after its first release! *Cloudbusting* is an event that no Kate Bush fan will want to miss!



THE CHICAGO BLUES BROTHERS: RESPECT

MUSIC Sat 5 Jul 7.45pm

Tickets £32.25

Age Guide 12+

Running Time 2hrs 20mins (including interval)

Fresh from London's West End, The Chicago Blues Brothers return to Newbury.

The *Respect* tour features Motown, soul, rock and roll and Blues Brothers' classics.

With an award-winning live band, soulful Sweet Sisters, and the legendary Jake and Elwood, this isn't just a show, it's the biggest Blues Brothers party around. Get ready for a night of non-stop fun and pure musical magic!

'TIGHT, CLASSY AND BRASSY'
THE STAGE



JAMES SEABRIGHT PRESENTS
**BONDING: THE MYTH, LEGEND AND
 LEGACY OF JAMES BOND**

THEATRE Tue 8 Jul 7.30pm

Tickets £26.25

Age Guide Suitable for all ages

Running Time 1 hour (no interval)

Cyril Blake's sell-out hit from the Edinburgh Fringe explores the myth, legend and legacy of James Bond.

Stephen has always wanted to be James Bond. He's got a tux, a fancy watch and he shakes everything he drinks. But, is this a good idea? Bond is a misogynist dinosaur, right?

Journey through 60 years of Bond and 30 years of Stephen as we find out if he can fulfil his father's idea of masculinity without becoming toxic.

This sell-out hit is directed by nine-time nominee and two-time OFFIE winner Matthew Parker and stars Cyril Blake as Stephen.



'HILARIOUS AND MOVING. EXCEPTIONAL!'

CALVIN DYSON, JAMES BOND EXPERT



**FASTLOVE: THE
 GEORGE MICHAEL
 TRIBUTE**

MUSIC Fri 11 Jul 7.45pm

Tickets £34.25

Age Guide Suitable for all ages

Running Time 2 hours
 (including interval)

**A brand-new tribute
 show for 2025!**

Make new memories whilst reliving old classics. This one is for the fans as we celebrate one of the greatest musicians the world has ever seen.

Power, emotion, star quality – this stunning production has it all with a full video and light show, as *Fastlove* respectfully recreates the soundtrack to your life.

LUZ & MANNION DANCE PRESENTS

BLUE GHOST



DANCE

Thu 10 Jul 7.30pm

Tickets £20.25
(£14.25 concessions)

Age Guide 5+

Running Time 1 hour
(no interval)

**'THE FLOW, STORY AND SHEER
ENERGY AND TECHNICALITY
WERE A DELIGHT'**

THE STAGE

Flamenco meets live electronic music in this innovative, multidisciplinary project.

Luz & Mannion draw our attention to the unexpected beauty and rhythm harboured in the insect world in a visual, dynamic and electric flamenco show. Inspired by the Blue Ghost Firefly and the importance of insect conservation, this is a nostalgic celebration that reminds us of our interconnectedness, embraces our need for transformation and shows us that even the smallest creatures have an important part to play.

Supported using public funding by the National Lottery through Arts Council England, St Margaret's House, Climate Art, Buglife UK & Xerces Society for Invertebrate Conservation

Image Credit: Camilla Greenwell





DREAMS OF FM – FLEETWOOD MAC TRIBUTE

MUSIC Sat 12 Jul 7.45pm

Tickets £32.50

Age Guide Suitable for all ages

Running Time 2hrs 20mins (including interval)

Relive the magic of Fleetwood Mac's greatest hits!

The *Dreams of FM* show successfully recreates the authentic look and sound, and every show is portrayed with the passion, energy and respect that the legendary band deserve.

From the haunting magic of *Rhiannon* to the anthemic power of *Go Your Own Way*, experience Fleetwood Mac's legendary hits like never before in a tribute show that brings their timeless sound to life.



THE DREAMER

MAGIC Thu 17 Jul 7.30pm

Tickets £31.25 (£47.25 VIP, includes a close-up magic meet and greet)

Age Guide 12+

Running Time 2hrs 20mins (including interval)

Star of *The Greatest Magician*TM, and the BBC's most broadcast magician of the last decade – the award-winning James Phelan debuts this breathtaking new magic show.

Most infamous for jamming the BBC switchboard after correctly predicting the lottery, and described as 'Joel Dommett meets Derren Brown,' *The Dreamer* is a celebration of the impossible becoming possible.

The Dreamer is an astonishing, enigmatic, five-star rated spectacle that will leave you aching with laughter and dizzy in disbelief. You can't afford to miss it!

'ONE TO WATCH IN THE WORLD OF MAGIC'
THE LIST



ELO AGAIN

MUSIC **Fri 18 Jul** 7.45pm

Tickets £32.25

Running Time 2hrs 30mins (including interval)

Celebrate the truly universal music of Jeff Lynne and the Electric Light Orchestra.

Step back in time and relive the magic of the Electric Light Orchestra with *ELO Again*. This exceptional tribute band offers an authentic re-creation of an ELO concert, complete with a stellar sound experience, captivating light show, and impressive visual effects.

ELO Again faithfully brings to life the iconic orchestrations, soaring strings, and powerful vocals that made ELO a household name. With hit after hit, the band captures the energy and spirit of ELO's unforgettable music. Expect *Mr. Blue Sky*, *Don't Bring Me Down*, *Last Train to London* and many more.



COUNTRY SUPERSTARS

MUSIC **Sat 19 Jul** 7.45pm

Tickets £31.25

Running Time 2hrs 45mins (including interval)

A must-see for any fans of country music!

Lead impressionists Sarah Jayne and Andy Crust, both of whom have been endorsed by Dolly Parton and Kenny Rogers bring a night of country hits to the Corn Exchange. The show features award-winning impersonations of Patsy Cline, Johnny Cash, Billie Jo Spears, Kenny Rogers, Willie Nelson, Tammy Wynette, Garth Brooks, John Denver, Glen Campbell, Shania Twain and includes the *Country Superstars* band.

Prepare for an evening of million-selling hits!


 The title 'ALICE IN WONDERLAND' is rendered in large, glowing, golden 3D letters. The word 'ALICE' is on the top line, 'IN' is in the middle, and 'WONDERLAND' is on the bottom line. Various Wonderland-themed items are scattered around the text: a purple pocket watch, a top hat, playing cards, a teacup, and a small figure. The background is a dark purple with a subtle circular glow behind the text.

ALICE IN WONDERLAND

CORN EXCHANGE NEWBURY INFANT AND JUNIOR YOUTH THEATRE PRESENTS

ALICE IN WONDERLAND

COMMUNITY

Fri 1 – Sun 3 Aug 1pm & 6pm

Tickets £17.25 (£14.75 concs)

Join us as our Infant and Junior Youth Theatre present the fantastical story of a girl and her curious friends.

Follow Alice down the rabbit hole into the wondrous world of Wonderland, meeting peculiar characters along the way. Will the rabbit make her late? Will the Cheshire Cat lead her astray? And could the Queen of Hearts really make her lose her head?

Alice in Wonderland is a cherished tale of twists and turns that delights both children and adults, based on the novel by Lewis Carroll and adapted by Kathryn Schultz Miller. Come along and join Alice in her wonderful fantasy adventure with a story that will remind us of the power of imagination, curiosity and creativity.

Box Office 01635 522733

41

SUPPORTERS

We are grateful for the support and generosity of all of our donors,
Members and Companions.

cornexchangenew.com/oursupporters

Corn Exchange gratefully acknowledges funding from:



Supported using public funding by
**ARTS COUNCIL
ENGLAND**



Funded by
UK Government



We would like to thank the following organisations for their generous support of the
Corn Exchange (Newbury) Trust and The Base Greenham:



BackstageTrust



The Linder Foundation



RIVAR LTD.



Stronger Starts.

**WAITROSE
& PARTNERS**



Adrian Swire Charitable Trust, Ambrose and Ann Appelbe Trust, Doris Field Charitable Trust, Englefield Charitable Trust, The Headley Trust, GJ Ward Charitable Trust, The Gordon Palmer Memorial Trust, The Lily and Marcus Sieff Charitable Trust, Miss Lawrence Trust, Mobbs Memorial Trust, Payne Gallwey Charitable Trust, Peter Baker Foundation, Sabina Sutherland Charitable Trust and Trelix Charitable Trust

Events wouldn't happen without our team of dedicated volunteers. We would like to thank all of our volunteers for kindly giving up their time. If you are over 18 and interested in taking part, please e-mail volunteers@cornexchangenew.co.uk or call 01635 582666.

BOOKING



VISIT US

Corn Exchange
Market Place
Newbury
Berkshire
RG14 5BD

Tue – Sat, 10am – 4pm
(or until 7pm if there is a
performance or screening on)
Sun, 11am – 4pm

What3Words
w3w.co/corn.season.beard

Learning Centre
Good Vibes Music Academy
123-126 Bartholomew Street
Newbury
RG14 5BN

For The Base see the Learning
Centre & The Base brochure.

TRAVEL

Corn Exchange and Learning Centre
are both in the town centre and a
5 minute walk from Newbury train
station. Please consider making the
green choice by walking to our venue
or taking a mode of public transport.
If you need to drive, parking is
available at a number of town centre
car parks; the closest are the Wharf
and Newbury Library, other car parks
nearby include the Kennet Centre,
Parkway and Northcroft Leisure
Centre. There are also multiple
bus stops and bicycle parking
areas within the Market Place. Visit
cornexchangenew.com/travel to find
out more.

HOW TO BOOK TALK TO US 01635 522733

Please see our website for up to date
opening hours.

E-MAIL US
boxoffice@cornexchangenew.co.uk

DISCOUNTS

Concessions are available on selected
shows for: Groups, Under-19s, Senior
Citizens, Full-time Students, Job
Seeker's Allowance, and Blue Light
Card holders. Those who are disabled
and their essential companions are
also entitled to concessions (where
concessions apply).

BOOKING FEES

All live events and live broadcasts
(including encores) will be subject to
a non-refundable £1.25 booking fee
per ticket which is included in the
advertised price. For exhibitions this
will be 75p. For films a 75p booking
fee is included in the price of the
ticket. Booking fees for schools and
groups will be capped at £7.50 per
booking. Companions are exempt
from the Ticket Booking Fee. No
booking fees are payable for our
workshops and courses programme.

TERMS

- Tickets are non-refundable except in
the case of a cancelled event.
- In the case of a sold-out show £1
per ticket will be payable on tickets
returned for resale and exchange.
Members and Companions are
exempt from this charge.
- Tickets can be posted for an
additional charge of £2.25. This is
non-refundable once tickets have
been posted, even in the case of an
event cancellation.
- Only one discount per ticket
and proof required to collect
concessionary tickets.
- Tickets for babies up to 18 months
must have a babe in arms ticket
which costs a £1 administration
fee unless otherwise specified for
specific events.
- All children under the age of 14 must
be accompanied by a paying adult.
- Pushchairs and prams will not be
permitted inside the auditorium.
- Some ticket prices include a
contribution of either £1 or 50p to the
investment fund levy. This is part of
the agreed contractual arrangements
with the visiting company.
- Some performances are on
general sale in advance of the
publication of the brochure;
subscribe to receive emails by visiting
cornexchangenew.com/newsletter
to be notified of any additions to
the programme.
- In the case of a show being
rescheduled, all customers will be
given the option to transfer their
tickets to the new date. If this new
date does not work for the customer,
a refund or credit to the full value
of the tickets will be offered. Please
note that once you have accepted
tickets for the rescheduled date the
standard terms and conditions of sale
will then apply.

- All tickets are sold subject to
availability and our current terms
and conditions. For full T&Cs please
visit cornexchangenew.com/legal

ACCESS

- Please tell us when booking if you
require an induction loop, if you
use a wheelchair or if you have any
additional access needs.
- The Corn Exchange, Learning
Centre and The Base are accessible
by wheelchair.
- The Corn Exchange and The
Base have accessible toilets.
The nearest accessible toilets to
the Learning Centre are in the
Kennet Centre and a radar key is
available from a member of the
Learning Centre team.
- Registered assistance dogs
are welcome.
- The Corn Exchange offers those
who are disabled concession
priced tickets (where concessions
apply). Essential Companion
tickets are also available at either
concession rate or complimentary
where applicable.
- To find out more about
accessible services and
performances at the
Corn Exchange please visit
cornexchangenew.com/access
or e-mail
boxoffice@cornexchangenew.co.uk

DATA PROTECTION

The Corn Exchange (Newbury)
Trust is committed to complying
with the General Data Protection
Regulation 2018 and to upholding
the principles of good information
handling practice. We will always
store your personal details securely.
We'll use your details to provide the
service that you have requested and
communicate with you in the way(s)
you have actively agreed to. We will
never pass your details on to anyone
else without your explicit consent. You
are free to amend how we contact you
at any time by changing your contact
preferences online or by e-mailing
boxoffice@cornexchangenew.co.uk.
Our full privacy policy is available at
cornexchangenew.com/privacy-policy.

The Corn Exchange (Newbury)
Trust is registered charity 1080567
and 3908975 company limited by
guarantee.

Brochure designed by The Graphic Design House. www.tgdh.co.uk

All information correct at the time of going to print on 14/10/24.

Please check the website for up-to-date information.

cornexchangenew.com

Box Office 01635 522733

43



Please recycle this brochure.

Visit our website